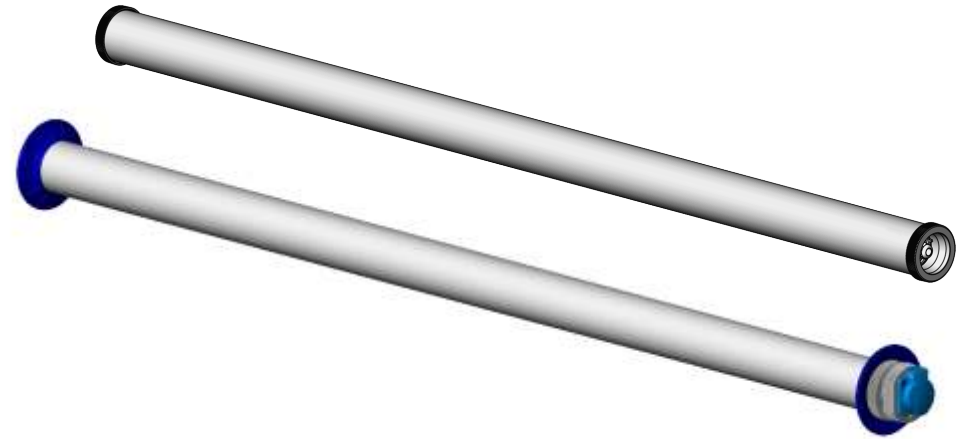
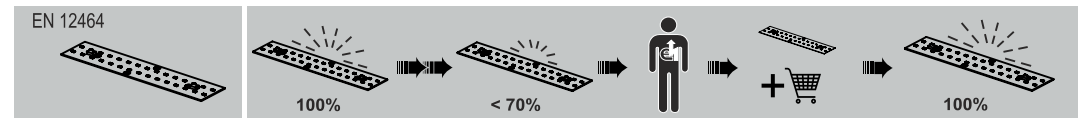
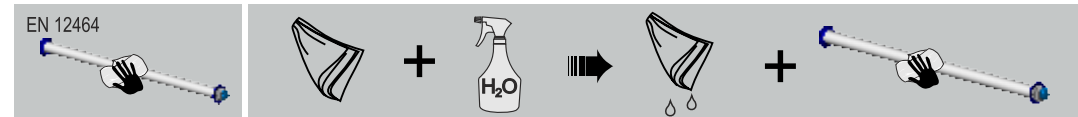


| | L1 | L2 |
|--------------|---------|---------|
| LED 12W | 345 mm | 390 mm |
| LED 23W | 625 mm | 670 mm |
| LED 33W | 905 mm | 950 mm |
| LED 46W | 1185 mm | 1230 mm |
| LED 56W | 1465 mm | 1510 mm |
| T5 27W / 38W | 615 mm | 660 mm |
| T5 45W / 48W | 915 mm | 960 mm |
| T5 54W / 62W | 1215 mm | 1260 mm |
| T5 85W / 78W | 1515 mm | 1560 mm |



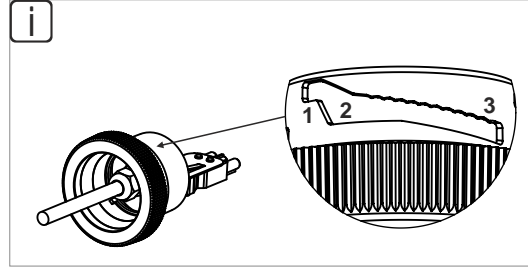
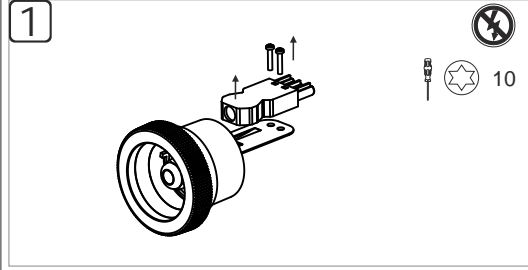
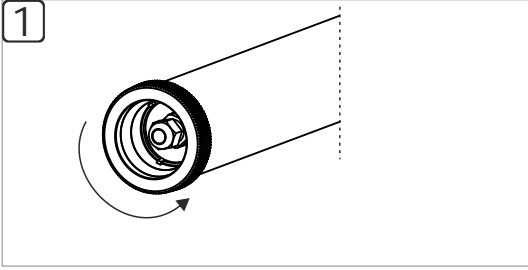
| | | | | |
|--|---|--|--|--|
| | Spannung voltage 230 V~ 0/50-60 Hz | | | |
| | Schutzart protection class IP 44 IP 54 IP 67 | | | |
| | Schutzklasse Type of protection SKL I SKL II | | | |



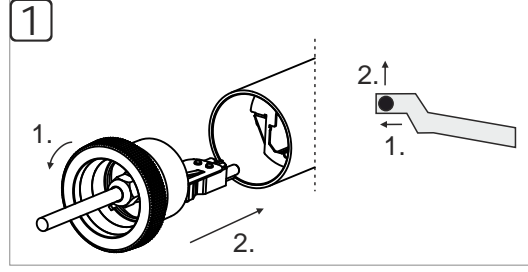
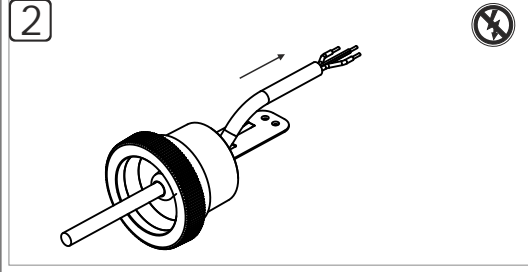
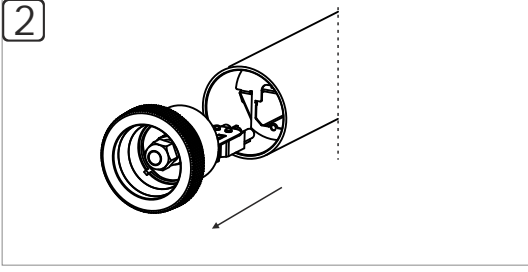
ÖFFNEN / OPEN

INSTALLATION / INSTALLATION

SCHLIESSEN / CLOSE

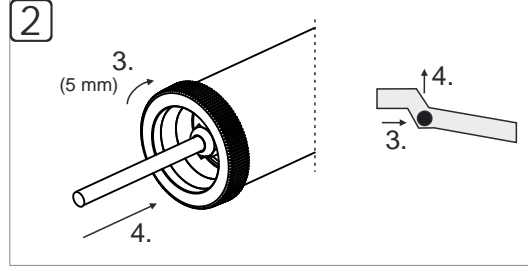
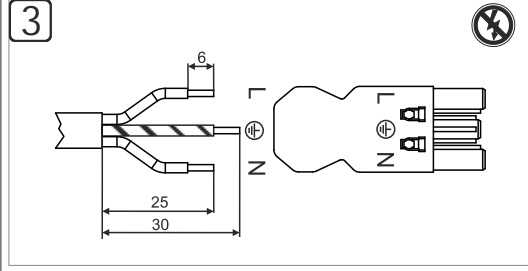


Innenliegender, nicht sichtbarer Ver-
schlussmechanismus /
Inside locking mechanism, not visible

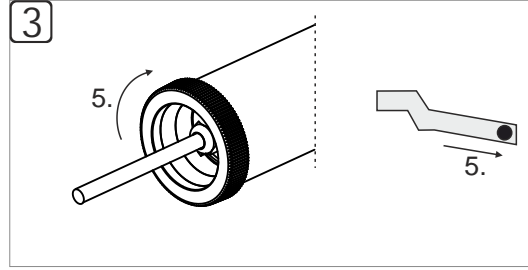
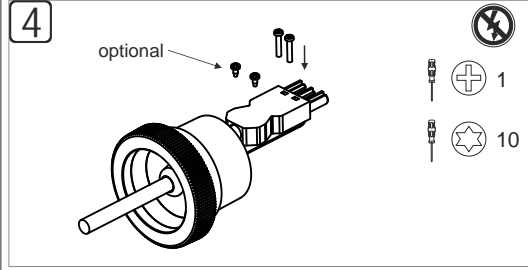
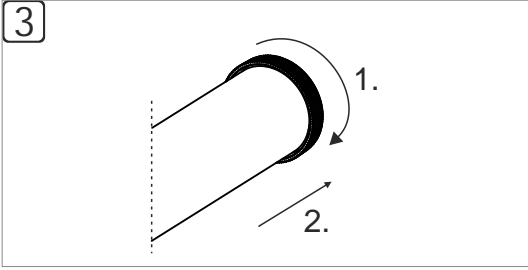


1. Endkappe bis zum Anschlag drehen /
Turn end cap until it stops
2. Endkappe vollständig einführen /
Fully insert end cap

ÖFFNEN 2. Seite für Durchverdrahtung
OPEN 2nd side for through-wiring



3. Endkappe 5mm im Uhrzeigersinn drehen /
Turn end cap 5mm clockwise
4. Dichtung anpressen / *Press down seal*



5. Endkappe im Uhrzeigersinn fest verschließen /
close end cap clockwise tightly

